

此空白页不需印刷

成品尺寸：95x130mm

展开尺寸：380x130mm

装订：风琴折页

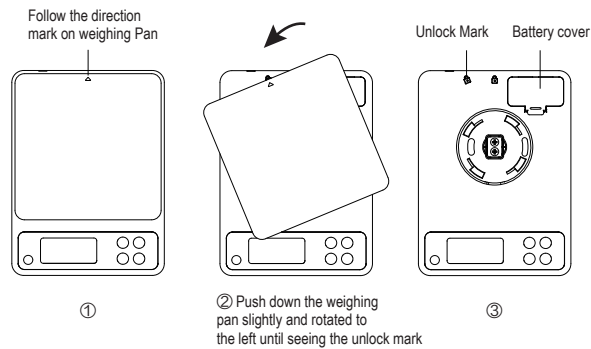
材质：80g双胶

印色：黑

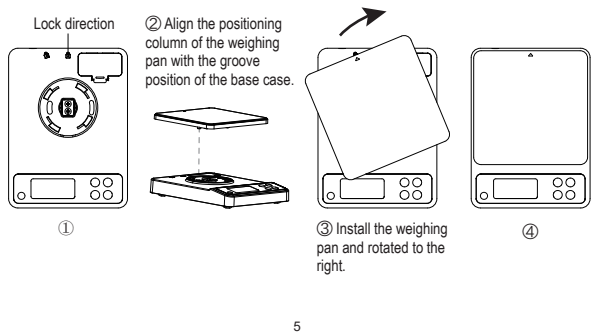
■ Weighing Pan Installation

● Weighing pan Remove

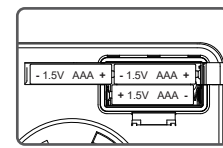
(Recommended to remove the weighing pan when clean or replace the battery.)



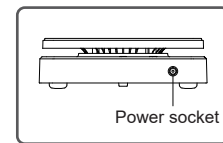
● Weighing pan Install



■ Power and Charging



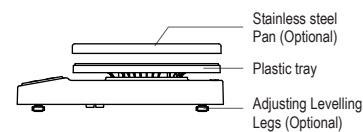
- 3 x 1.5V AAA battery (Optional)
1. Remove the Weighing Pan.
 2. Open the battery cover and take out the old battery
 3. Install the new battery, pay attention to the positive and negative mark.



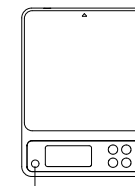
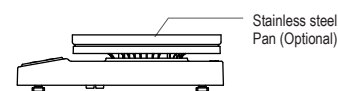
Power cord (Optional)
Input 5V $\overline{\text{---}}$ 200mA, $\ominus \oplus$, please pay attention to select the charging head, otherwise it will cause damage to the internal circuit.

■ Assembly Diagram

- ① Stainless steel Pan can covered install on the Plastic tray



- ② Stainless steel Pan can be turned over and placed on the Plastic tray



Bubble level (Optional)

Remark:

Only applicable to the product equipped with stainless steel pan; For models equipped with adjustable levelling legs, the vibration of the scale body during transportation will cause the height of the support legs to change, so needed the level adjustment before use.

■ Clean and Maintenance

1. DO NOT immerse the product in water or use chemical or corrosive cleaners.
2. DO NOT store the scale in high temperature/humidity environment.
3. DO NOT strike, shock or overload the scale, even if scale power off.
4. Cleaning the plastic parts immediately if they've been contact with oil, spicy ingredients, vinegar, or other irritating substances (avoid contact with citrus juice).
5. Place the scale on a solid and flat surface while weighing.
6. This product is a precision equipment. Handle with care, and do not disassemble it casually.
7. If the scale cannot be turned on, please check whether the batteries are installed or if the battery voltage is sufficient.

24TP-001E R1

■ Specification

1. 5-digit LCD display
2. Automatic battery voltage detection
3. Software temperature compensation
4. Use 1x3.7V lithium battery or 3x1.5V AAA batteries or External DC 5V power supply
5. Use buzzer as prompt sound

■ Basic Function

1. Weighing Function

Auto Zero after switch on, loaded weight, display weighing value.

- (1) Zero: Reset weighing reading to zero.

The auto-zero range after power on: $\pm 10\%$ FS (of the maximum capacity);

The zero range is: $\pm 2\%$ FS (of the maximum capacity).

- (2) Tare: Press the "Tare" button to enter Tare mode.
- (3) Overload: When the weight exceeds the maximum capacity, it displays: Err.

2. Automatically enter power saving mode without operation.

- (1) When powered on, the backlight will automatically turn off after the scale is stable for 15 seconds.
- (2) After entering the power-saving mode and turning off the backlight, if a weight change or key operation is detected, the backlight will automatically turn on, and it will shut down after 10 minutes of no operation.

1

3. Battery Low-voltage prompt

- (1) Lithium batteries and dry batteries:
When the battery voltage drops to 3.2~3.6V, the LCD displays an Low-voltage prompt.
- (2) When displayed "Lo" on weighing windows, the scale will automatically shut down.

■ Key Illustration

Press shortly: Zero / Power on
Press and hold: Power off

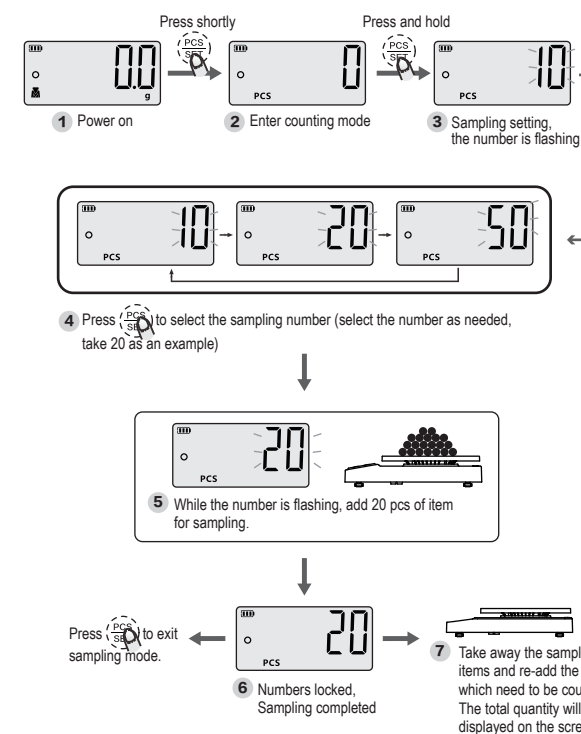
Press shortly: Tare mode
Press and hold: Calibration mode

Press shortly: Unit convert
Press and hold: Activate Sensitive Mode:
The buzzer will beep for 3 seconds, while "S-L" show then release the button.

Press shortly: Counting mode
Press and hold: Counting mode setting

2

■ Counting Function (Sampling first before counting)



3

■ Sensitive Mode

Turn on the scale and after Zero, Press and hold the key to adjust the response sensitivity of the scale.

High Sensivity(Deafult)

Regular Speed

■ Calibration

Turn on the scale and after Zero, Press and hold the key to enter the calibration mode, the weight to be calibrated (such as 1000g) is displayed. Loaded the standard unit weight (1000g), while "F" then "1000.0g" displayed on weighing windows, calibration finish.

■ Warning

1. If "Err" is displayed during turn-on the scale, the system parameters are incorrect and should be sent for repair immediately.
2. When overloaded during weighing, "Err" will displayed on weight windows.
3. When the undervoltage indicator light is on or the symbol flashes, it indicates that the battery voltage is insufficient and the scale just available for short-term use, Please plug in the DC 5V power supply or replace the new dry battery.
4. "LO" symbol appears means battery voltage is low, the scale could only be used for a short term. Please charge as soon as possible. Please plug in the DC 5V power supply or replace the new dry battery.

4