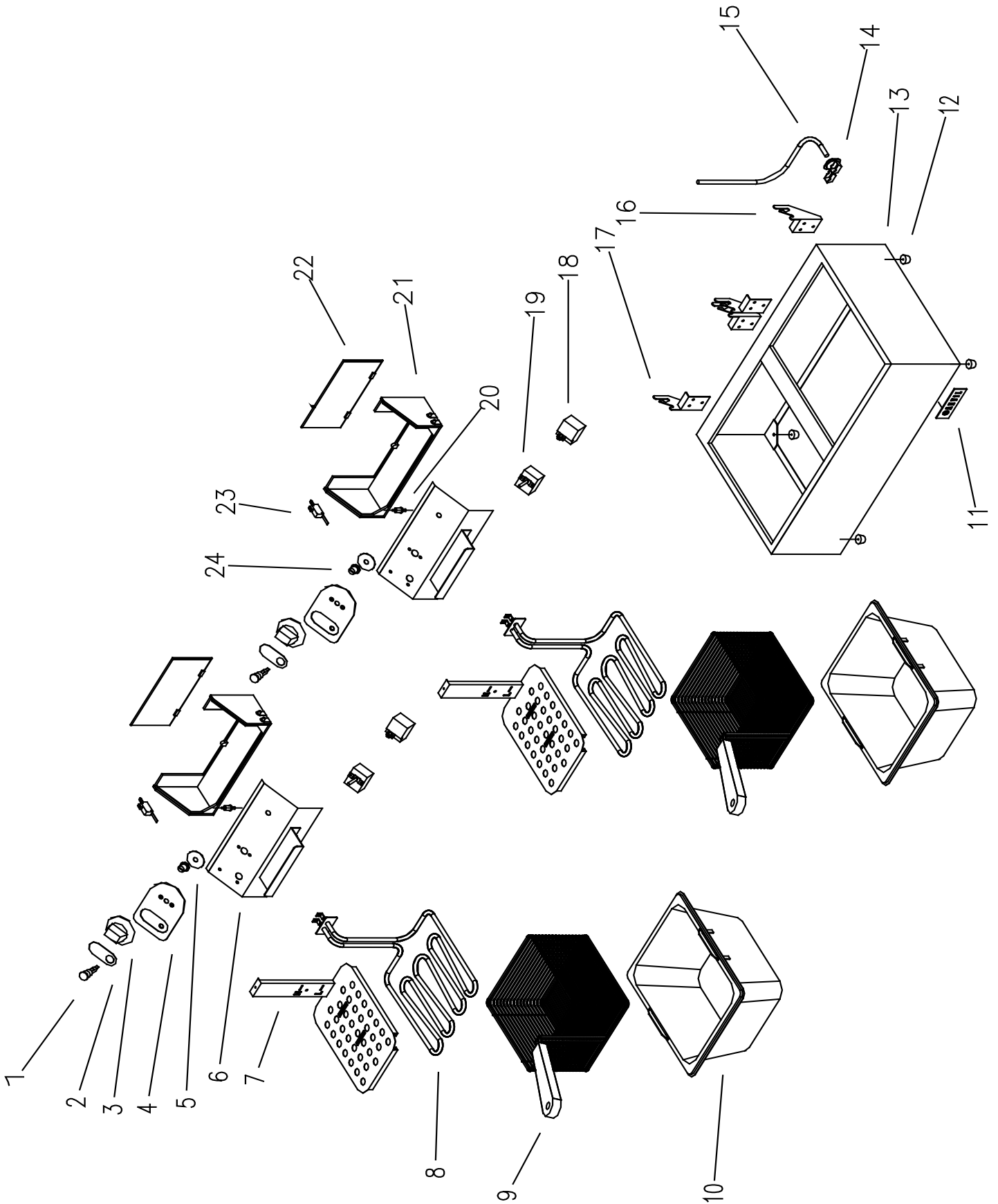


# Double Deep Fat Fryer - CE Approved Model Code - FFA2002-230



**DOUBLE DEEP FISH FRYER - CE APPROVED**

**MODEL CODE : FFA2002**

<b>Part No.</b>	<b>SCE Part No.</b>	<b>Description</b>
1	1-PL-GP	PILOT LIGHT
2	4-ANVIL-CP-IN-1	CONTROL PANEL INSERT
3	3-KNOB-FF	KNOB 60-200C
4	3-CP-ANVIL	CONTROL PANEL FACIA
5	4-FACIA SAFETY	SAFETY CUT OUT BEZAL
6		STAINLESS STEEL ELEMENT BOX
7		STAINLESS STEEL ELEMENT COVER
8	5-2500W-FF	FAT FRYER ELEMENT
9	FFB2250	FAT FRYER BASKET
10	FFI0150	FAT FRYER INSERT
11	4-ANVIL-LOGO	ANVIL BADGE
12	3-S-RDS	SMALL RUBBER FOOT
13		BODY
14	3-CG-1.5	CABLE GRIP
15	2-PC-CE-DR	POWER CORD
16	8-FF-HINGE-L	LEFT FAT FRYER HINGE
17	8-FF-HINGE R	RIGHT FAT FRYER HINGE
18	1-THERMO-FF-SAF	FAT FRYER OVER TEMP THERMOSTAT
19	1-THERMO-FF-UL	FAT FRYER THERMOSTAT
20	3-MS-FFA0001	MICROSWITCH PUSH PIN
21	3-FF-ELEMENTBOX	PLASTIC ELEMENT BOX
22	3-FF-BACKPLATE	PLASTIC BACK PLATE
23	1-FF-MICROSWITCH	FAT FRYER MICROSWITCH
24	3-FF-SAF-CAP	SAFETY CUT OUT CAP